

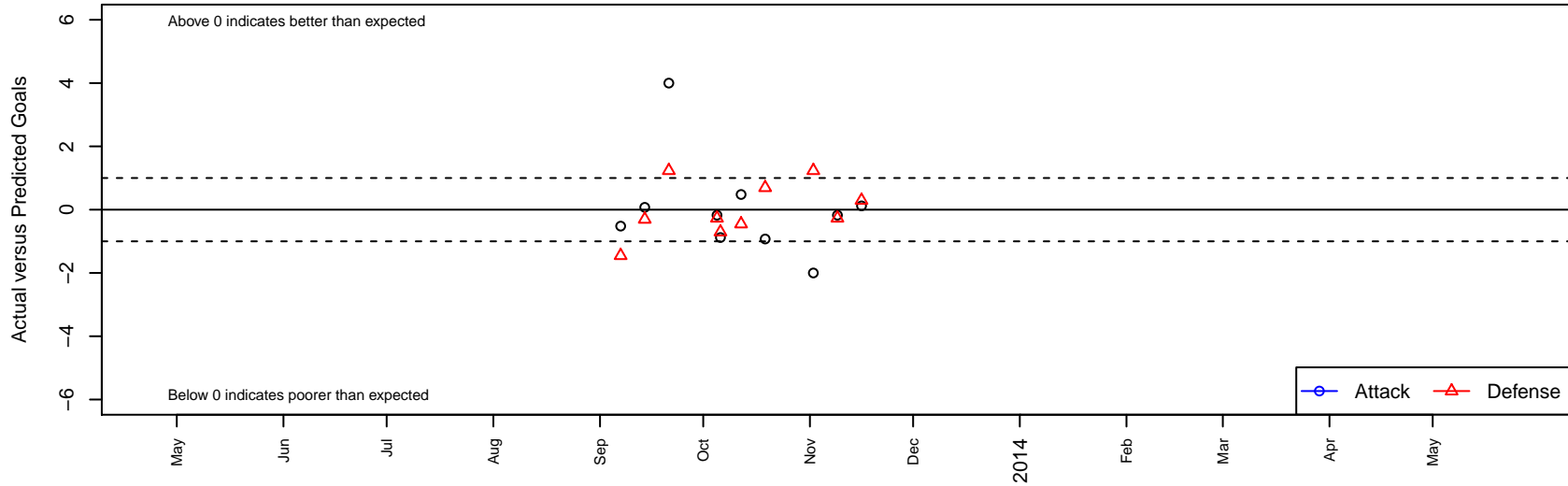
Livermore Fusion SC Maroon G01

, CAN
 G01 total strength=862
 attack=1.75 defense=0.87
 alt names used:
 Livermore Fusion SC Maroon G01
 Livermore Fusion SC 01G Maroon

Venues played:
 NorCal Premier F11 – Region 3–4 U12



Livermore Fusion SC Maroon G01
 Dots are actual minus expected GF (blue circles) and GA (red triangles).
 Blue line is smoothed change in attack strength. Red is smoothed change in defense strength.



	date	home		away		venue	pred.home	pred.away
6574	2013-11-16	ACC Mavericks Dynamite G01	2	Livermore Fusion SC Maroon G01	2	NorCal Premier F11 – Region 3-4 U12	2.29	1.88
6471	2013-11-09	Livermore Fusion SC Maroon G01	1	Diablo FC G01	2	NorCal Premier F11 – Region 3-4 U12	1.17	1.73
6327	2013-11-02	San Ramon 02 Azuri G01	0	Livermore Fusion SC Maroon G01	0	NorCal Premier F11 – Region 3-4 U12	1.23	2.00
6014	2013-10-19	Mustang Blast G01	1	Livermore Fusion SC Maroon G01	0	NorCal Premier F11 – Region 3-4 U12	1.69	0.93
5852	2013-10-12	Livermore Fusion SC Maroon G01	2	EBU Bay Oaks Gold Bombers G01	2	NorCal Premier F11 – Region 3-4 U12	1.52	1.55
5778	2013-10-06	Livermore Fusion SC Maroon G01	1	ACC Mavericks Dynamite G01	3	NorCal Premier F11 – Region 3-4 U12	1.88	2.29
5665	2013-10-05	Diablo FC G01	2	Livermore Fusion SC Maroon G01	1	NorCal Premier F11 – Region 3-4 U12	1.73	1.17
5362	2013-09-21	Livermore Fusion SC Maroon G01	6	San Ramon 02 Azuri G01	0	NorCal Premier F11 – Region 3-4 U12	2.00	1.23
5194	2013-09-14	Livermore Fusion SC Maroon G01	1	Mustang Blast G01	2	NorCal Premier F11 – Region 3-4 U12	0.93	1.69
5040	2013-09-07	EBU Bay Oaks Gold Bombers G01	3	Livermore Fusion SC Maroon G01	1	NorCal Premier F11 – Region 3-4 U12	1.55	1.52